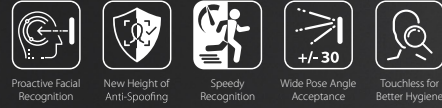
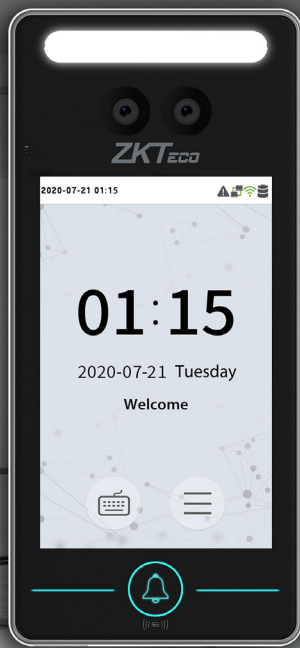


MiniAC

Linux-Based Hybrid-Biometric Access Control & Time and Attendance
Terminal with Visible Light Facial Recognition



Compatible with **ZKBio CVSecurity** **easy TimePro**

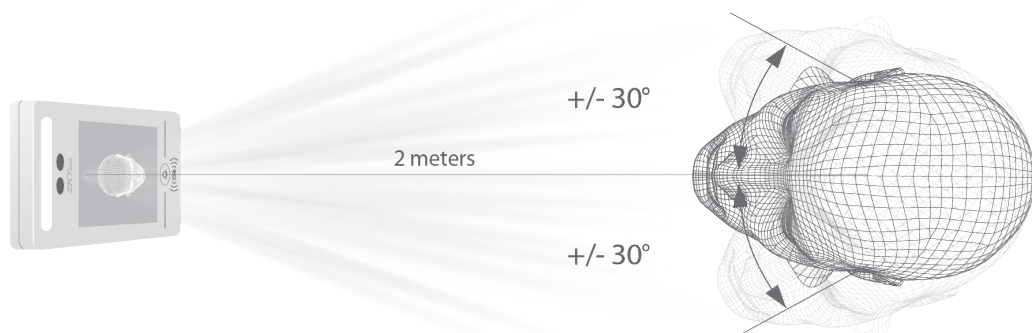
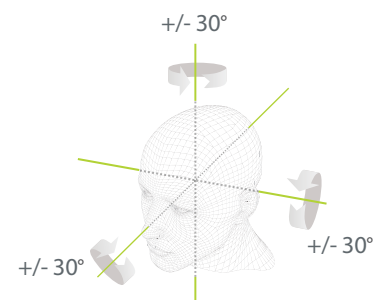


Features

- Visible Light Facial Recognition
- Anti-spoofing algorithm against print attack (laser, color and B/W photos), videos attack and 3D mask attack
- Multiple verification methods: Face / Card / Password
- Available card modules: 125kHz ID card (EM) / RFID S50/S70 IC card (13.56MHz) 1k/4k
- Supplement light with adjustable brightness
- 1,000 face templates capacity

2 meters of recognition distance and extra wide angle recognition

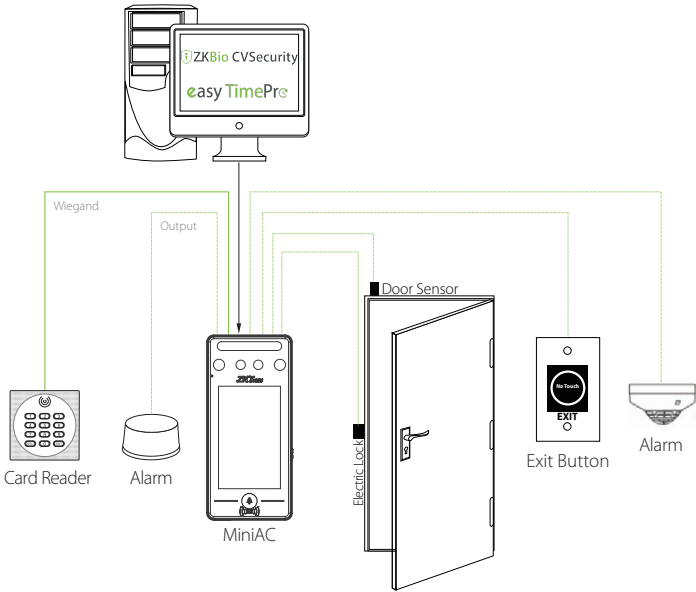
The recognition distance has been greatly extended to 2 meters, which significantly improves the maximum traffic rate. While most of the algorithms only support +/-15° of detectable face angle, MiniAC doubles the detection angle in terms of head rotation and tilt to +/- 30°.



Specifications

Display	4" touch screen
Face Capacity	1,000
Card Capacity	1,000
Transactions	150,000
Operation System	Linux
Standard Functions	ID Card, ADMS, T9 Input, DST, Camera, 9-digit User ID, Access Levels, Groups, Holidays, Anti-passback, Record Query, Tamper Switch Alarm, Multiple Verification Methods
Hardware	900MHz Dual Core CPU; 512MB RAM / 512MB ROM; 2MP Binocular Camera; Adjustable LED Supplement Lighting
Communication	TCP/IP, WiFi, Wiegand Input/Output, RS485
Access Control Interface	3rd-party Electric Lock, Door Sensor, Exit Button, Alarm Output, Auxiliary Input
Optional Function	RFID S50/S70 IC card (13.56MHz) 1k/4k
Facial Recognition Speed	≤1s
Biometrics Algorithms	ZKFace V5.8
Power Supply	12V 3A
Working Humidity	10% ~ 90%
Working Temperature	0°C ~ 45°C (32°F ~ 113°F)
Dimensions (W*H*D)	72.94 * 157.94 * 23 (mm)
Net Weight	260g
Supported Software	ZKBio CVSecurity, easy TimePro

Configuration



Dimensions (mm)

